

DEALER STAMP

Barford's policy is one of continuous improvement and the right to change prices, specifications or equipment at any time without prior notice is reserved.

All data given in this brochure is subject to production variations. For exact information about any particular model and for equipment details, please contact your Barford dealer.



Barford Construction Equipment  
Invicta Works Houghton Road Grantham Lincolnshire NG31 6JE  
Tel 01476 515500 Fax 01476 515450

Designed and produced by Andrew Cook 07919 288365



SX/SXR/HDX SERIES

SITE DUMPERS





THE POWER TO ACHIEVE

BARFORD SX / SXR / HDX SERIES SITE DUMPERS



# 70 years of HORSE power

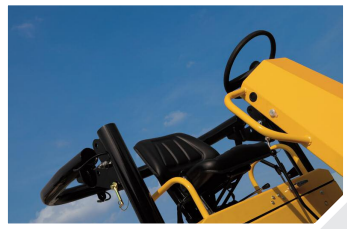


In 1933 the merger of Aveling and Porter with Barford and Perkins, the UK's leading manufacturers of steam powered road rollers, gave birth to a powerful force in precision engineering – Aveling-Barford. Diversifying to meet the needs of the growing market for motor powered construction equipment, Aveling-Barford introduced the UK to its first site dumper in 1936. The post war years of the late 1940s and early 1950s heralded a new era in the demand for construction equipment. This, coupled with Aveling-Barford's sound understanding of the rapidly evolving civil engineering industry, formed a catalyst for the progressive development of ever more sophisticated and bigger machinery.

New lines were designed, developed, produced and exported to a hungry international market and many of Barford's products became recognised the world over as industry bench-marks for quality and innovation. Barford site dumpers are still produced today from the 65 acre factory in Grantham, Lincolnshire. As part of the family owned Wordsworth Holdings Group, Barford prides itself on a long tradition of designing and manufacturing robustly engineered, reliable dumpers. Still recognised today by the characteristic 'work horse' symbol, Barford Construction Equipment produces a comprehensive range of commercially viable site dumpers, backed up by unrivalled levels of service.



All Barford Dumpers come fitted with ROPs safety frames in a straight or folding configuration as required



Thoughtful design features such as this all in one secure battery housing and step come as standard with Barford



# a **WILLING** horse

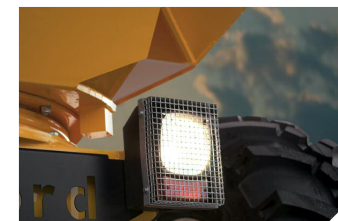
Time served earth movers, the Barford SX Series of Forward Tipping dumpers are built to withstand the rigours of the construction site. Manufactured using industry proven components, the SX Series offers some of the strongest and most robust dumpers on the market today. Powerful engines coupled with no-compromise 4-wheel drive systems throughout the range, ensure that Barford dumpers keep moving, even in the most demanding conditions. Laser cut components and robot welded frames ensure precision assembly for the sturdy articulated chassis.

Couple this with an all steel body and a skip produced from steel plate proven to be thicker than the industry standard, and the result is a range of dumpers built without compromise. So it's no surprise that Barford's customers have come to demand and expect vigorous standards of quality and reliability. Barford strives to provide the lowest cost of ownership on the market. From the initial purchase through to the added security of an excellent dealer network, and lastly but not least, the length of service you expect from your Barford dumper.

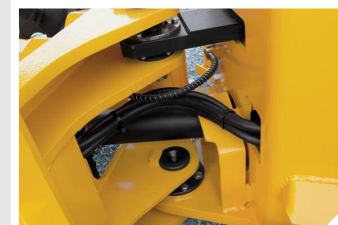


**SXR****ROTARY SKIPS** SXR8000 SXR7000 SXR6000 SXR5000 SXR3000BARFORD **SXR** SERIES SITE DUMPERS

Protected driving lamps  
for road use are among  
a range of optional  
extras that are  
available to order



Heavy duty articulation  
joints are designed to  
stand the test of time



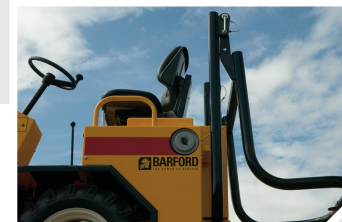
# tipping the **BALANCE**

Barford's SXR Rotary Tipping Series of dumpers are built to the same exacting standards as their Forward Tipping stable mates, but benefit from the additional versatility of a skip that can be rotated through 180 degrees for easier loading and unloading. Whatever the job Barford has an SXR Rotary dumper to suit. The comprehensive range spans from the 3 tonne model through to the massive 7 and 8 tonne turbo charged machines. SXR provides your work force with a necessary tool for safe efficient work.

The rotary skip cuts down time taken in trench work; if you can't get the dumper into the right position to tip, you can simply rotate the skip. A directional skip minimises the difficulty of working in confined spaces by cutting out the need to direct the dumper. Ease of use is further enhanced through the inclusion of powershuttle as standard in both the SXR and SX Series from the 5 tonne up to the mighty 9 tonne, and there is an optional hydrostatic drive available on the 3 tonne machine.



Fully certified ROPS folding safety frame allows for safe overnight container storage



Over 1.59 metre reach allows for high discharge of up to 1 tonne into skips and small lorries



Choose from three different tyre types to tailor your machine to it's primary use



# small but perfectly FORMED

When space is truly at a premium the Barford HDX comes into its own.

Unlike many other high discharge dumpers that claim to be narrow access,

the HDX is genuinely less than 1 metre wide so it can fit comfortably through

standard doorways. This enables access to even the most awkward spaces

for loading and unloading. The capabilities of the HDX are further enhanced

by its great manoeuvrability and the capacity to discharge the skip up to a

height of 1.59 metres, allowing you put the load exactly where you want it.

A full steel body keeps accidental damage to a minimum, permitting you to

work in the tightest confines whilst reducing the risk of costly repairs from

bumps and scrapes. The Barford HDX Series of High Discharge dumpers

comes as both 1000 or 750 kg loading capacities, with the choice of

standard, industrial or grassland tyres. It forms the perfect partner for

transporting materials to those more confined areas on site or when

working with a mini or micro excavator.



At just 980mm wide HDX can fit through even the tightest of spots with ease



PEACE OF MIND AND SPECIFICATION

“Barford allowed us a real reduction in our overheads”

ENGINEERED to last

“They just keep on going. Barford truly understand our needs...”

From design, throughout production and into aftersales, quality is a watch word with Barford. Engineered to generate optimum rewards for the user, tough quality standards ensure that when you purchase a Barford dumper, you purchase a long tradition of value. With construction sites being hazerdous places to work, Barford have strived to ensure maximum piece of mind for the operator. All dumpers come fitted with a fully certified Roll Over Protection System (ROPS), in either a straight or folding configuration.

Throughout the Barford range, design, specification and manufacturing all meet with strict European standards. An international dealer network, with staff well acquainted with Barford’s products, is there to help and support you throughout the life of your dumpers. Indeed, Barford knows that quality is as important when caring for a customer as when manufacturing their machine. And with a full manufacturers warranty Barford are there to support and partner you along the way.

High Discharge Skips Specifications

MODEL	HDX1000	HDX750
CAPACITIES DIMENSIONS AND WEIGHTS		
Payload	1000kg	750kg
Water capacity	203 ltr	203 ltr
Struck capacity	514 ltr	376 ltr
Heaped capacity	527 ltr	444 ltr
Overall length	2825mm	2825mm
Overall width:		
- standard tyres 6.5/80-15	980mm	980mm
- industrial tyres 27/8.50-15	1080mm	1080mm
- grassland tyres 10.0/80-15	1140mm	1140mm
Overall height - ROPS up	2480mm	2480mm
Overall height - ROPS down	1730mm	1730mm
Discharge height - max	1615mm	1615mm
Discharge height - min	735mm	735mm
Turning circle	2.7m	2.7m
Unladen weight	1070kg	1050kg

TECHNICAL SPECIFICATION

Engine type	LDW 602 FOCS
Engine power	9.3kw@2800rpm
Transmission	Close coupled 3 forward and 1 reverse gear ratios and Borg & Beck clutch, heavy duty gear drive dropbox via prop shafts to Newage 100RF axles.
Brakes - primary	Disc brake hydraulically applied to transfer box.
Brakes - parking	Disc brake cable applied to transfer box.
Speed - forward	0-14kph
Speed - reverse	0-3.6kph

“This has proved to be one of our best business decisions”

Forward Tipping Skips & Rotary Skips Specifications

MODEL	SX2000	SX3000	SXR3000	SX5000	SXR5000	SX6000	SXR6000	SX7000	SXR7000	SX8000	SXR8000	SX9000
CAPACITIES DIMENSIONS AND WEIGHTS												
Payload	2 tonnes	3 tonnes	3 tonnes	5 tonnes	5 tonnes	6 tonnes	6 tonnes	7 tonnes	7 tonnes	8 tonnes	8 tonnes	9 tonnes
Water capacity	665 ltr	969 ltr	1163 ltr	1710 ltr	1672 ltr	1916 ltr	1922 ltr	2052 ltr	2077 ltr	2052 ltr	2129 ltr	2052 ltr
Struck capacity	900 ltr	1270 ltr	1300 ltr	2097 ltr	2198 ltr	2338 ltr	2305 ltr	2752 ltr	2627 ltr	2942 ltr	3144 ltr	3287 ltr
Heaped capacity	1150 ltr	1754 ltr	1705 ltr	2914 ltr	2995 ltr	3339 ltr	3070 ltr	3793 ltr	3510 ltr	3776 ltr	3950 ltr	4320 ltr
Overall length	3536mm	3537mm	3940mm	4089mm	4555mm	4252mm	4556mm	4252mm	4579mm	4267mm	4579mm	4382mm
Overall width	1750mm	2050mm	1780mm	2163mm	2163mm	2375mm	2280mm	2495mm	2321mm	2495mm	2495mm	2495mm
Overall height - ROPS up	1847mm	1910mm	1910mm	3014mm	3014mm	3014mm	3098mm	3098mm	3098mm	3158mm	3158mm	3158mm
Overall height - ROPS down	937mm	1000mm	1000mm	2000mm	2000mm	2000mm	2080mm	2080mm	2080mm	2140mm	2140mm	2140mm
Prow height	1233mm	1310mm	1540mm	1604mm	1712mm	1675mm	1930mm	1685mm	1835mm	1656mm	1836mm	1685mm
Width over tyres	1740mm	1865mm	1865mm	2160mm	2160mm	2230mm	2230mm	2245mm	2245mm	2310mm	2310mm	2311mm
Wheel base	1865mm	1870mm	1870mm	2400mm	2400mm	2400mm	2400mm	2400mm	2400mm	2400mm	2400mm	2400mm
Ground clearance	275mm	320mm	320mm	290mm	290mm	290mm	370mm	370mm	370mm	430mm	430mm	430mm
Side loading height	1295mm	1410mm	1595mm	1730mm	1771mm	1785mm	1870mm	1850mm	1895mm	1857mm	1896mm	1960mm
Outer turning circle	9.3m	9.4m	9.4m	12.2m	12.4m	12.6m	12.5m	12.6m	12.5m	12.4m	12.4	12.4
Unladen weight FOPS	2062kg	2262kg	2422kg	4200kg	4245kg	4310kg	4710kg	4330kg	4800kg	4388kg	4893kg	4473kg

TECHNICAL SPECIFICATION

Engine type	Deutz F2L2011F 21kw @ 2800rpm 1366cc	Deutz F3L2011F 31.5kw @ 2800rpm 2049cc	Deutz F3L2011F 31.5kw @ 2800rpm 2049cc	Iveco N45MNA 60kw @ 2300rpm 4485cc	Iveco N45MNA 60kw @ 2300rpm 4485cc	Iveco N45MNA 60kw @ 2300rpm 4485cc	Iveco N45MNA 60kw @ 2300rpm 4485cc	Iveco N45MNS 75kw @ 2300rpm 4485cc	Iveco N45MNS 75kw @ 2300rpm 4485cc	Iveco N45MNS 75kw @ 2300rpm 4485cc	Iveco N45MNS 75kw @ 2300rpm 4485cc	Iveco N45MNS 75kw @ 2300rpm 4485cc
Transmission	Heavy duty constant mesh gearbox 3 forward and 1 reverse gear. Dia 229mm heavy duty, single dry plate clutch. Gear reduction transfer box* Powershuttle transmission, 4 speeds forward and reverse with torque converter. Heavy duty drive train											
Axles and brakes	Heavy duty double reduction axles with fully floating half shafts. Totally enclosed oil immersed disc brakes – front only Heavy duty double reduction axles with totally enlosed oil immersed disc brakes. Transmission parking brake front only											
Wheels and tyres	10.0/75-15.3 8 ply rating	11.5/75-15.3 10 ply rating	11.5/75-15.3 10 ply rating	12.5/80-18 16 ply rating	12.5/80-18 16 ply rating	405/70-20 14 ply rating	405/70-20 14 ply rating	405/70-20 14 ply rating	405/70-20 14 ply rating	18.0-19.5 16 ply rating	18.0-19.5 16 ply rating	18.0-19.5 16 ply rating
Tank capacities	Fuel 68 ltr / Hydraulic oil 40 ltr Fuel 68 ltr / Hydraulic oil 40 ltr											
Road Speed mph/kph	2.4 3.8	2.5 4.0	2.5 4.0	3.1 5.0	3.1 5.0	3.2 5.2	3.2 5.2	3.0 4.8	3.0 4.8	3.0 4.8	3.0 4.8	3.0 4.8
1st gear	5.5 8.7	5.88 9.5	5.88 9.5	5.2 8.3	5.2 8.3	5.3 8.4	5.3 8.4	4.9 7.8	4.9 7.8	4.9 7.8	4.9 7.8	4.9 7.8
2nd gear	10.0 16.0	11.0 17.6	11.0 17.6	9.5 15.2	9.5 15.2	9.9 15.8	9.9 15.8	9.2 14.7	9.2 14.7	9.2 14.7	9.2 14.7	9.2 14.7
3rd gear				17.6 28.1	17.6 28.1	17.9 28.7	17.9 28.7	16.7 26.8	16.7 26.8	16.7 26.8	16.7 26.8	16.7 26.8
4th gear												
Reverse gear	2.5 4.2	2.94 4.7	2.94 4.7									

\*Hydrostatic Drive: Both the SX3000 and SXR3000 are available with hydrostatic transmission with automotive control and a 2 speed direct motor.